

**ILLINOIS INTERNATIONAL
PORT DISTRICT**

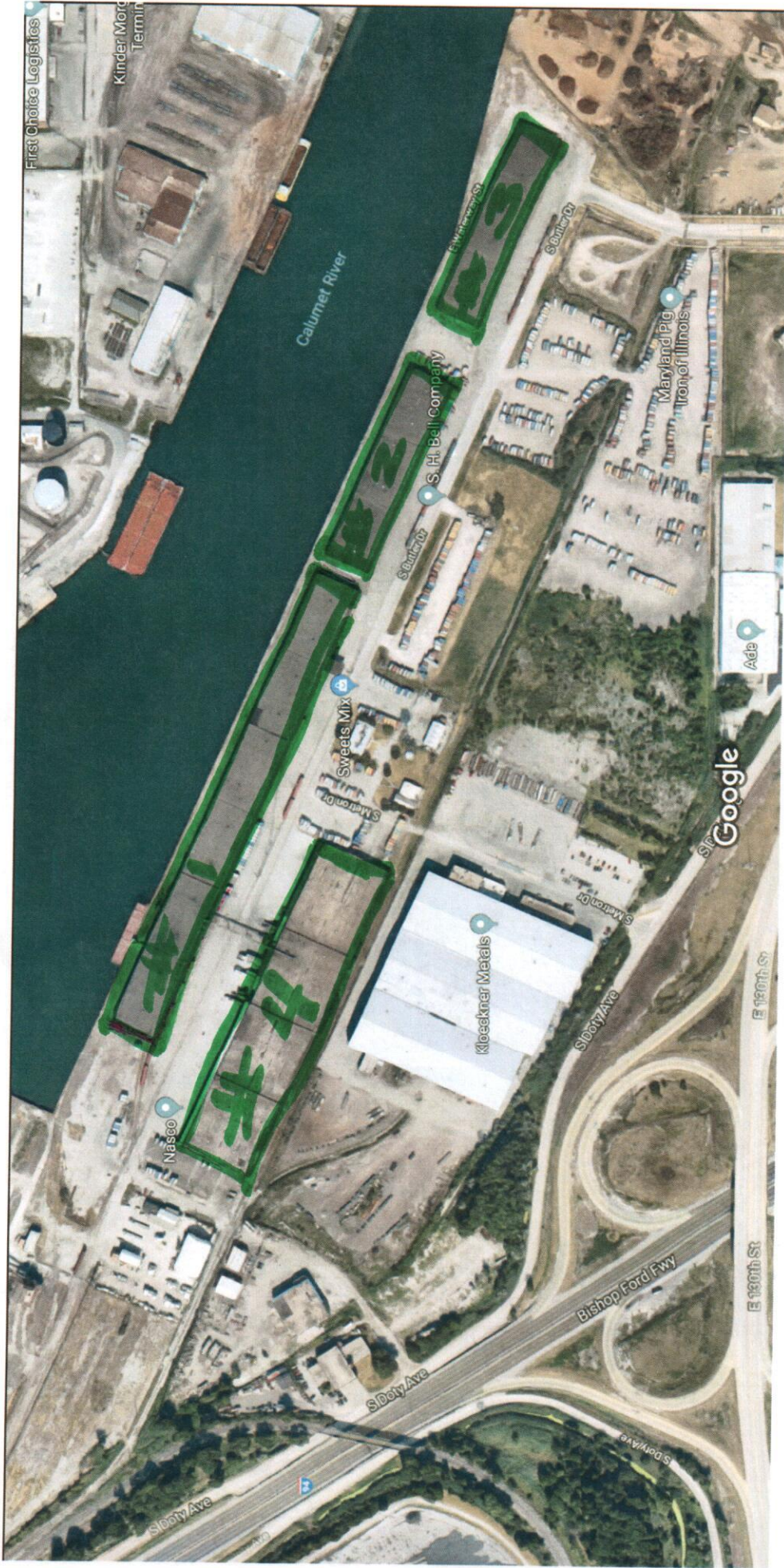
3600 E. 95th Street
95th and the Lakefront
Chicago, IL 60617-5193
773-646-4400
773-221-7678 (FAX)

Responses to the Questions in response to:

Procurement of Electrical Energy and other Products generated from Commercially Proven Photovoltaic (PV) generation facilities RFP.

1. How big this system will be/ or at least the exact address of the sheds referenced in the RFP?
 - a. **The exact address of the sheds are 12800 S. Butler Drive, Chicago, Illinois 60633.**
2. What exact legal entity would be the counterparty signing a solar contract?
 - a. **The legal entity that will be the counterparty signing the solar contract will be the Illinois International Port District (IIPD).**
3. How many ComEd electric utility accounts does IIPD have? The reason for this question is that IL state law only allows for solar projects to be up to 2MWac per electric utility account.
 - a. **The Illinois International Port District has no less than ten (10) utility accounts with ComEd. It is believed that the IIPD in and of itself probably would use 1MW and that any additional energy could/would be used beyond the IIPD's needs.**
4. Can you share an electrical single line diagram, so we can see how we might tie-in the solar array?
 - a. **An onsite inspection of the premises is scheduled for Monday, June 11, 2018 at 1:30pm at the IIPD HQ located at 3600 E. 95th Street, Chicago, Illinois 60617.**
5. The roofs on the sheds appear to be old, can they sustain the envisioned equipment? If not, how will the IIPD move forward with the winning bid? Can the RFP response contemplate allowance of the usage of credits to replace or fix said roofs?
 - a. **The sheds are circa 1960s and should be able to sustain the contemplated structures but the IIPD would look at the usage of credits to upgrade the roofs to ensure structure stability.**
6. Which buildings roofs exactly are available for solar?
 - a. **The building roofs which are available for solar are sheds #1, 2, 3 and 4. See attached photo or go to <https://earth.app.goo.gl/Anvdr>**





Imagery ©2018 Google, Map data ©2018 Google 100 m

Sheds # 1, 2, 3 & 4